



ENTRY INFORMATION

\$100 per team/\$200 for boys and girls

\$20 for individuals Entries will be handled through vbmeets, this is not a Enduro meet. Entry link:

<https://www.vbmeets.com/32754>.

Up to three athletes in all events - You can run more than one relay. You may enter more than 3 athletes if you pay for a "B" team (\$15/person not to exceed \$60).

ENTRY FEE

Make check payable to OBU TRACK & FIELD and mail to:

OBU Track & Field

Attn: Ford Mastin

OBU 500 W. University

Shawnee, OK 74804

You may also bring check to the meet and pay at Packet Pickup.

BUS DROP-OFF/PARKING

Buses should enter campus in such a way as to be traveling west on University Street. Buses may enter the Event Parking Lot south of the Chance Track via the western entrance for athlete & coach drop off and exit the lot via the east drive. Buses will then be directed to Bus Parking across the street at the Shawnee Regional Airport.

HANDICAP PARKING

Handicap parking spaces will be made available along University Street next to the Tennis Courts.

SPECTATOR ADMISSION

Students and spectators under the age of 18 will be admitted free of charge. Adult ticket prices are \$5.00

PACKET PICKUP

Teams must pick up their meet packet at the tent just inside the Stadium Gate. There will be tickets to receive

A lunch for coaches in the concession stand.

TEAM CAMP AREA

Tents should be set up on the south end of the upper fields, east of stadium nearest the sand volleyball courts. No tents will be allowed inside the exterior fence surrounding the Eddie Hurt Jr. Memorial Track Complex.

DRESSING/RESTROOMS

No dressing rooms will be made available for visiting teams. Restrooms are available on the first level of the Track Timing Press Box and in the lobby of the Recreation and Wellness Center.

WARM-UP AREA

The athlete warm-up area will be located outside of the exterior fence, behind the east grandstands and north of the team camp area. Hurdles will be available. Please see the map provided to locate the warm-up and team camp area.

COMPETITION AREA

The competition area is located inside the green perimeter fence surrounding the track. ONLY competing athletes and discus coaches will be allowed in this area.

ATHLETE CHECK-IN

Athletes will be heated approximately 30 minutes before their event. All athletes MUST have their competitor number on their hand before they arrive at the heating/field event area. The Heating Area will be located at the southeast corner of the track. Field Event athletes should check in at the event site.

RESULTS

Live results will be available at blacksquirreltiming.com, on the scoreboard following the last heat of each event and posted on the bulletin boards at the Track Timing Press box.

AWARDS

Medals will be awarded to top three individuals and relays in each division. Team Champion and Team Runner-Up trophies for each division will also be awarded. Coaches may pick up awards at the conclusion of the meet at the press box.

ATHLETIC TRAINING/FIRST AID

Teams/schools are responsible for their own athletic training needs. OBU Athletic Trainers will be available *FOR EMERGENCIES ONLY*.

MINIMUM MARKS/MEASUREMENTS

A minimum throw/jump mark will be utilized to speed up the competition. ALL competitors will have their FIRST LEGAL ATTEMPT MEASURED. THE FOLLOWING ATTEMPTS MUST BE PAST THE MINIMUM MARK.

EVENT	MINIMUM/STARTING HEIGHT
GIRLS DISCUS	80-00
BOYS DISCUS	100-00
GIRLS SHOT PUT	30-00
BOYS SHOT PUT	40-00
GIRLS LONG JUMP	14-00
BOYS LONG JUMP	19-00
GIRLS HIGH JUMP	4-04
BOYS HIGH JUMP	5-04
GIRLS POLE VAULT	8-00
BOYS POLE VAULT	10-00

CONCESSION STAND

A concession stand, operated by Chartwells Food Service, will be available at the south end of the track from 9:00AM-5:00PM.

COACHES HOSPITALITY

A hospitality room, located in the Keck Workout Area inside the Chance Track Building, for 3 coaches per school will be available during the meet. Wristbands for coaches will be included in each team's packet and will be necessary for entry. Coffee, juice and doughnuts will be available from 8:30AM until gone. A catered lunch, provided by Robb's Smokehouse, will be served from 11:00AM-1:00PM.

COACHES BOXES

Designated coaching boxes will be available outside of the green fence/competition area for the high jump, pole vault, long jump and shot put. A discus coaching box will be available on the infield, near the discus ring. Only discus coaches will be allowed on the infield and should enter through the gate on the north end nearest the scoreboard.

CONTACT

Ford Mastin - ford.mastin@okbu.edu, (405) 405-570-9952

Mark Heard - mark.heard@okbu.edu, (405) 585-5322



OKLAHOMA BAPTIST UNIVERSITY BISON INVITATIONAL Shawnee, Ok

Field Events - 9:00AM

Shot Put: Large School (Boys) - Small School (Boys) - Large School (Girls) - Small School (Girls)

Discus: Small School (Boys) - Large School (Boys) - Small School (Girls) - Large School (Girls)

Long Jump: Small School (Boys) - Large School (Boys) - Large School (Girls) - Small School (Girls)

High Jump: Small School (Girls) - Large School (Girls) - Small School (Boys) - Large School (Boys)

Pole Vault: Large School & Small School (Boys) - Large School & Small School (Girls) *Points and medals will be awarded separately.

Running Events - 9:00AM

3200m Relay: Small School (G) - Large School (G) - Small School (B) - Large School (B)

400m Relay: Small School (G) - Large School (G) - Small School (B) - Large School (B)

100m Hurdles: Small School (G) - Large School (G)

110m Hurdles: Small School (B) - Large School (B)

3200 Run: Small School (B) - Large School (B)

800m Relay: Small School (G) - Large School (G) - Small School (B) - Large School (B)

3200 Run: Small School (G) - Large School (G)

100m Dash: Small School (G) - Large School (G) *East Side of Track

100m Dash: Small School (B) - Large School (B) *West Side of Track

800m Run: Small School (G) - Large School (G) - Small School (B) - Large School (B)

400m Dash: Small School (G) - Large School (G) - Small School (B) - Large School (B)

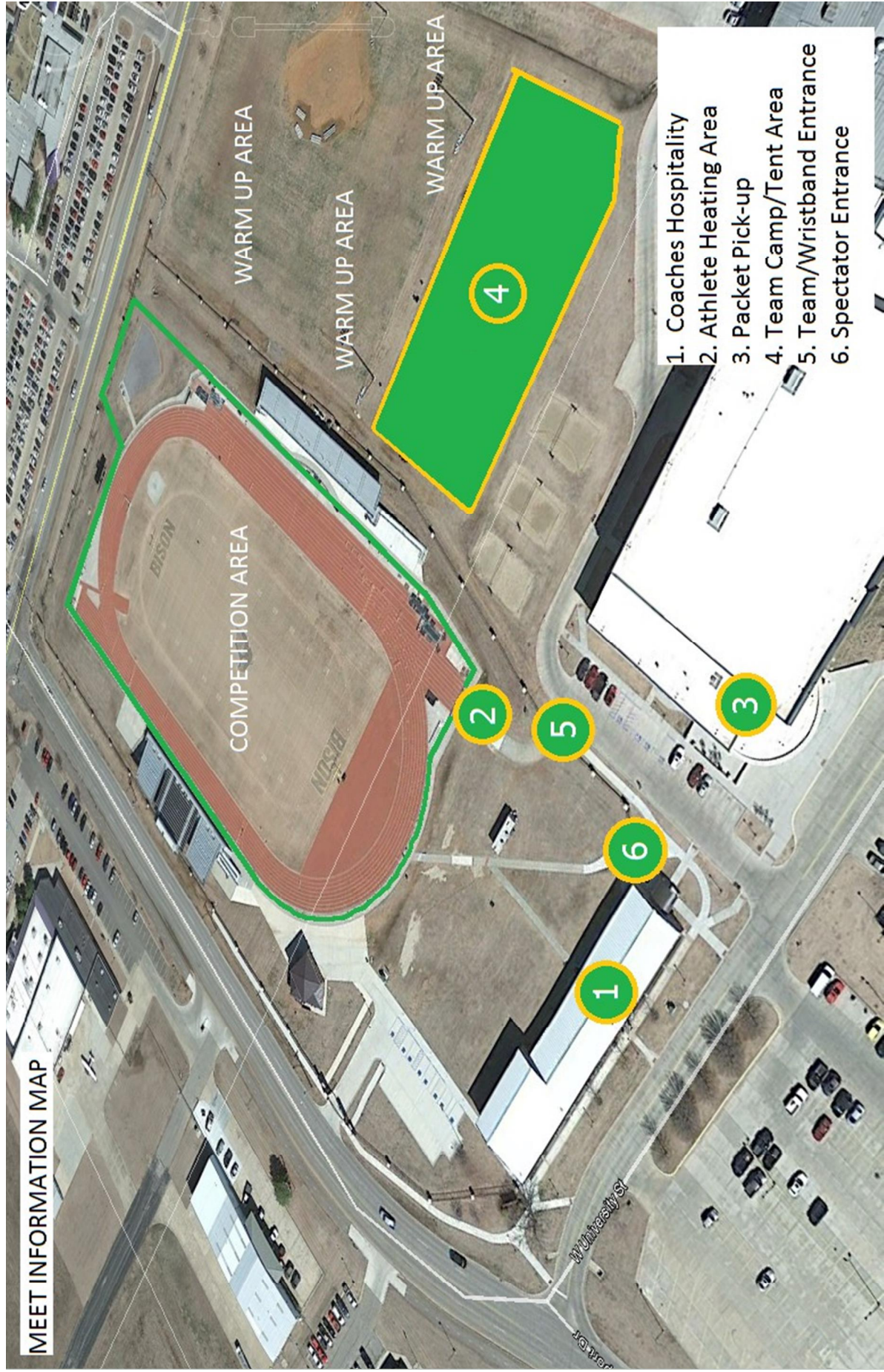
300m Hurdles: Small School (G) - Large School (G) - Small School (B) - Large School (B)

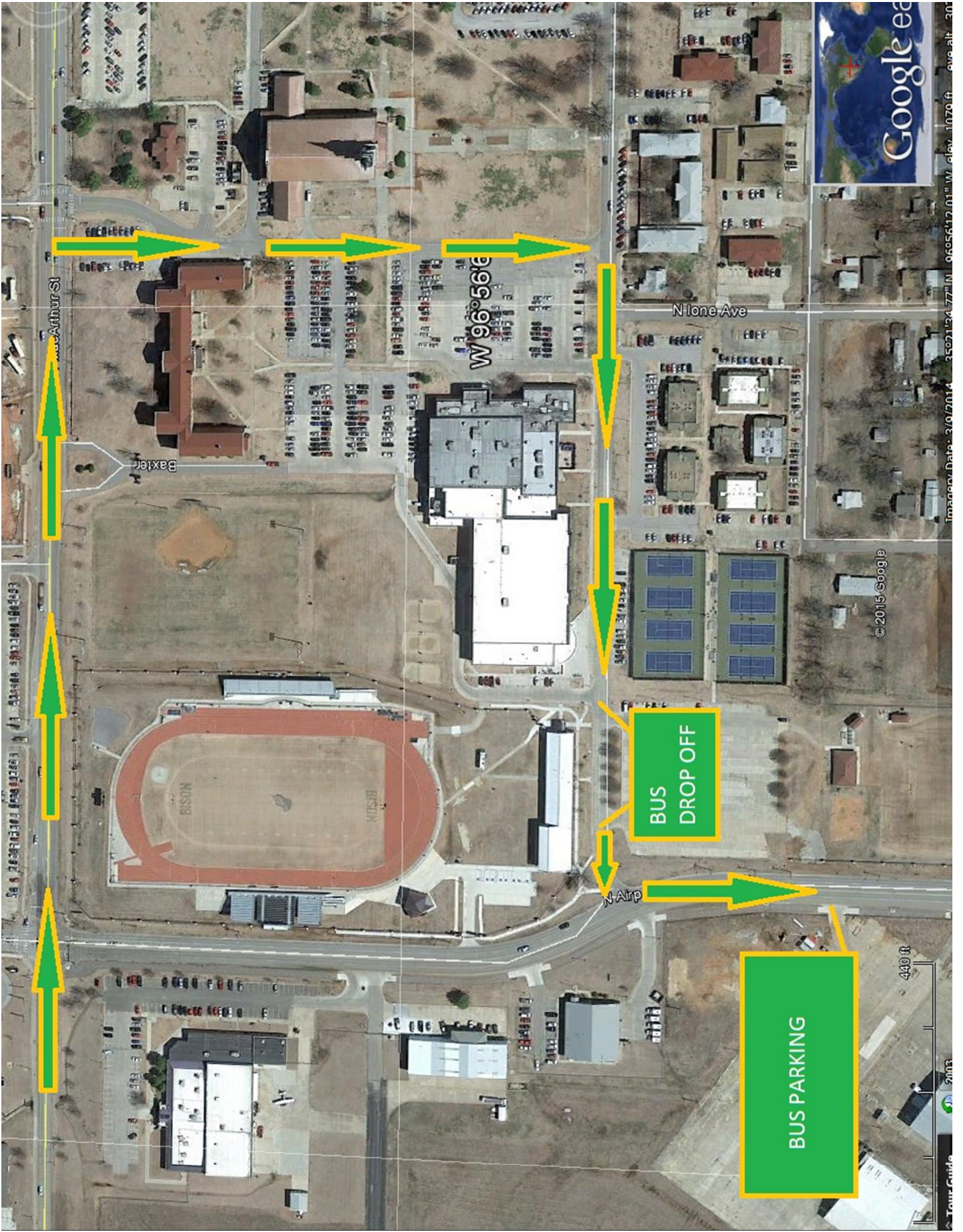
200m Dash: Small School (G) - Large School (G) - Small School (B) - Large School (B)

1600m Run: Small School (G) - Large School (G) - Small School (B) - Large School (B)

1600m Relay: Small School (G) - Large School (G) - Small School (B) - Large School (B)

MEET INFORMATION MAP





Arthur St

W 96th Ave

N Lone Ave

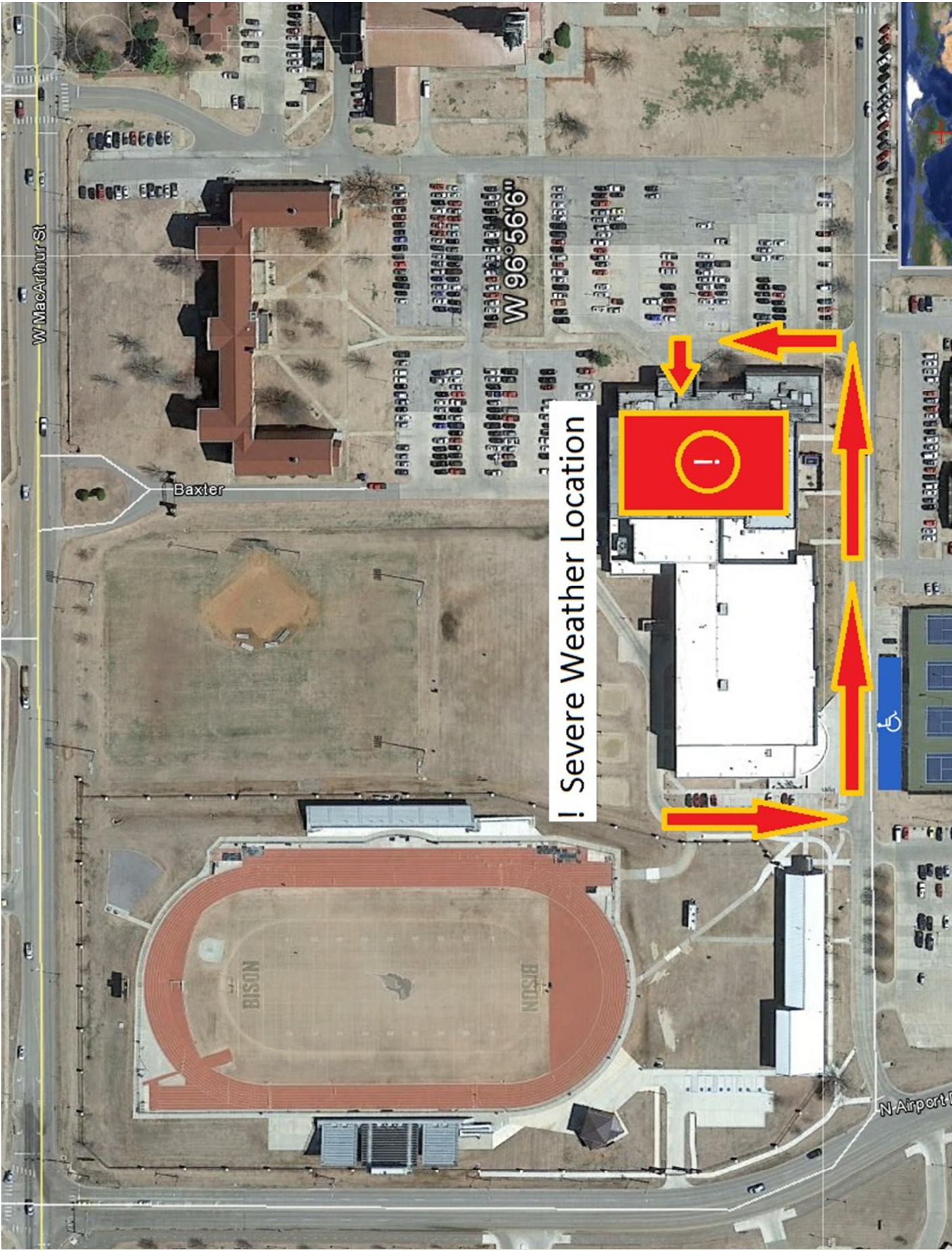
N Arp

BUS
DROP OFF

BUS
PARKING

© 2015 Google

440 ft



! Severe Weather Location

Baxter

W MacArthur St

W 96° 56' 6"

N Airport Blvd

BISON

BISON

♿

APPROVED SPIKES

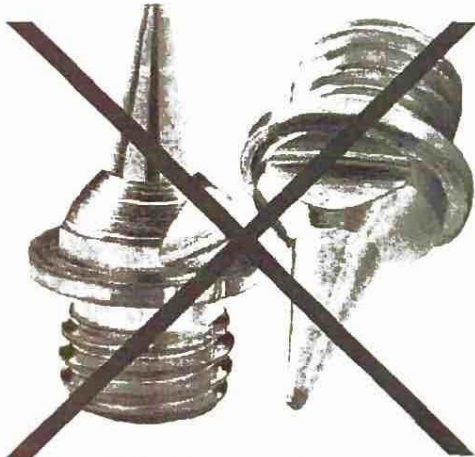


1/4" PYRAMID SPIKE (CONE)

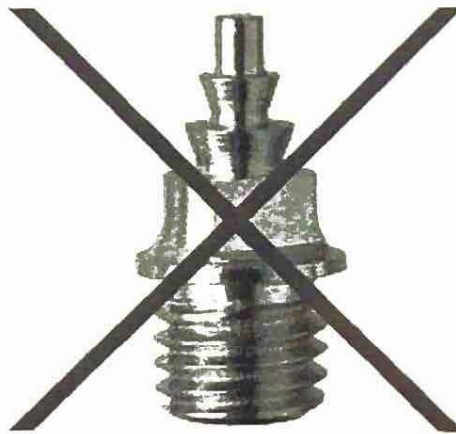


**12MM TORX CYLINDER SPIKE
(HIGH JUMP ONLY)**

ILLEGAL SPIKES



NO NEEDLE SPIKES



NO CHRISTMAS TREE SPIKES