



You are invited to the 4th Annual MOORELAND XC INVITATIONAL Cross Country Meet.

**DATE:** TUESDAY, SEPTEMBER 24, 2024

**PLACE:** MOORELAND XC Course (3.25 miles south on County Road 214, it's paved). See attached map for detailed directions.

**RACE SCHEDULE:**

4:00 P.M.	COACHES MEETING
4:30 P.M.	ELEMENTARY BOYS & GIRLS 6TH GRADE & BELOW (1300M)
5:00 P.M.	JUNIOR HIGH GIRLS 7-8 GRADES ONLY (3200M)
5:30 P.M.	JUNIOR HIGH BOYS 7-8 GRADES ONLY (3200M)
6:00 P.M.	HIGH SCHOOL GIRLS (3200M)
6:30 P.M.	HIGH SCHOOL BOYS (5000M)

*EACH RACE WILL BEGIN AFTER THE PREVIOUS RACE FINISHES. UNLIMITED ENTRIES PER DIVISION.*

**AWARDS:** TOP 15 IN EACH VARSITY DIVISION. ELEMENTARY TOP 25(combined).

**ENTRY FEE:**

HIGH SCHOOL, \$75.00 (unlimited entries)

JUNIOR HIGH, \$50.00 (unlimited entries)

ELEMENTARY, \$30.00 (unlimited entries)

INDIVIDUAL ENTRIES FOR ALL DIVISIONS ARE \$10.00 (UP TO FOUR ENTRIES)

**SPECTATOR ADMISSION:** \$5 per car, handicap parking available along south fence with views of the majority of the cross country course.

**PLEASE MAKE CHECKS PAYABLE TO:** MOORELAND PUBLIC SCHOOLS % XC

**ON-LINE ENTRIES:** Coaches must submit all entries on the ENDURO USA™ website:

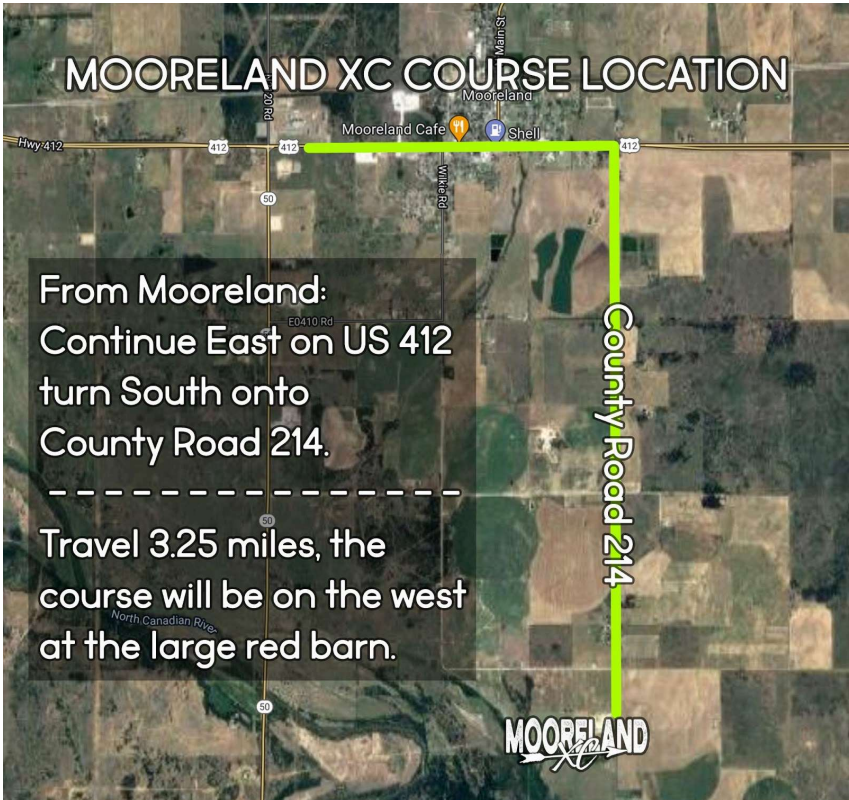
[www.endurousa.com](http://www.endurousa.com). — NO ADDITIONAL ENTRIES AFTER THE DEADLINE. —ONLINE

**ENTRIES DEADLINE:** (Monday, Sept 23) at noon. Complete ALL the steps on the "Entries Window". Make sure to "VERIFY". TEAMS WILL NOT BE ADDED AT THE MEET. If you need help with your ENDURO USA™ account, please email your questions to [jhughes@elginps.net](mailto:jhughes@elginps.net).

**MEET TIMING & RESULTS:** Timing for the meet is provided by 12:1 Running Timing Services. Live results are available at [www.twelve1running.com](http://www.twelve1running.com).

**QUESTIONS CALL OR TEXT: KENDRA HOOVER (405) 761-8146 EMAIL: [hoover@mooreland.k12.ok.us](mailto:hoover@mooreland.k12.ok.us)**

# MOORELAND XC COURSE LOCATION

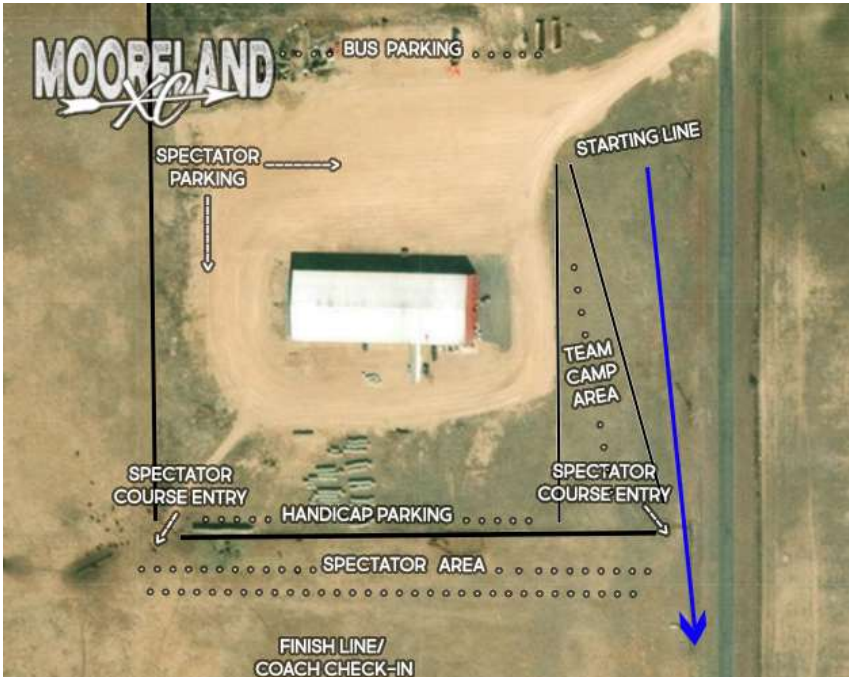


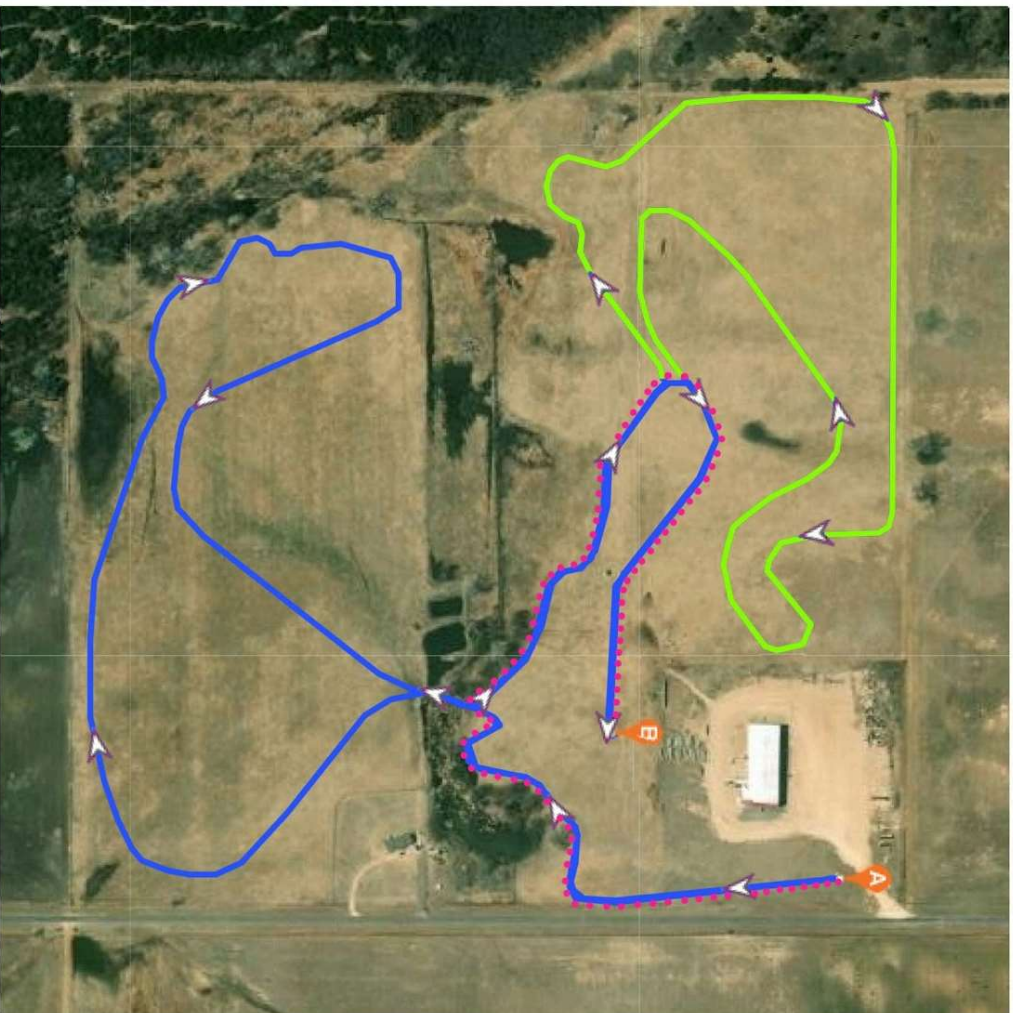
From Mooreland:  
Continue East on US 412  
turn South onto  
County Road 214.

-----

Travel 3.25 miles, the  
course will be on the west  
at the large red barn.

MOORELAND  
XC





# MOORELAND

## COURSE LEGEND

- HS BOYS 5000M BLUE & NEON
- HS GIRLS 3200M BLUE
- JH BOYS 3200M BLUE
- JH GIRLS 3200M BLUE
- ELEMENTARY 1300M PINK DOTS