



You are invited to the 3rd Annual MOORELAND UNASHAMED MEMORIAL Cross Country Meet. We are excited to run the Unashamed Memorial in honor and remembrance of our dear friend and former athlete Ben Brown.

DATE: THURSDAY, OCTOBER 17, 2024

PLACE: MOORELAND XC Course (3.25 miles south on County Road 214, it's paved). See attached map for detailed directions.

RACE SCHEDULE:

9:00 A.M.	COACHES MEETING
9:30 A.M.	HIGH SCHOOL BOYS (5000M)
10:00 A.M.	HIGH SCHOOL GIRLS (3200M)
10:30 A.M.	JUNIOR HIGH BOYS 7-8 GRADES ONLY (3200M)
11:00 A.M.	JUNIOR HIGH GIRLS 7-8 GRADES ONLY (3200M)
11:30 A.M.	ELEMENTARY (combined) 6TH GRADE & BELOW (1300M)
12:00 P.M.	ADULT OPEN DIVISION

EACH RACE WILL BEGIN IMMEDIATELY AFTER THE PREVIOUS RACE FINISHES. UNLIMITED ENTRIES PER DIVISION.

AWARDS: TOP 25 IN EACH DIVISION, ELEMENTARY 25

ENTRY FEE:

HIGH SCHOOL, \$75.00 (unlimited entries)

JUNIOR HIGH, \$50.00 (unlimited entries)

ELEMENTARY, \$30.00 (unlimited entries)

INDIVIDUAL ENTRIES FOR ALL DIVISIONS ARE \$10.00 (UP TO FOUR ENTRIES)

OPEN DIVISION ENTRY FEE: \$10 per participant, walk up registration is welcome. Please check-in at the finish line. Participants are welcome to compete, run, jog, or walk in memory of Ben Brown.

SPECTATOR ADMISSION: \$5 per car, handicap parking available along south fence with views of the majority of the cross country course.

PLEASE MAKE CHECKS PAYABLE TO: MOORELAND PUBLIC SCHOOLS c/o XC

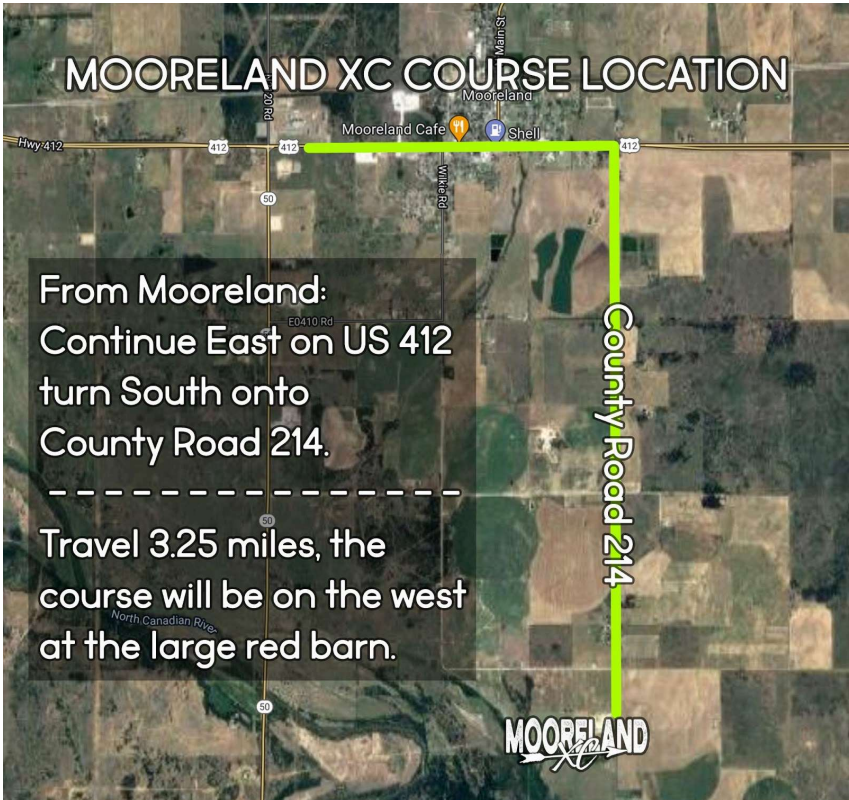
ON-LINE ENTRIES: Coaches must submit all entries on the ENDURO USA™ website: www.endurousa.com. — NO ADDITIONAL ENTRIES AFTER THE DEADLINE. —ONLINE

ENTRIES DEADLINE: (Wednesday, October 16) at noon. Complete ALL the steps on the "Entries Window". Make sure to "VERIFY". TEAMS WILL NOT BE ADDED AT THE MEET. If you need help with your ENDURO USA™ account, please email your questions to jhughes@elginps.net.

MEET TIMING & RESULTS: RFID Chip Timing for the meet is provided by 12:1 Running Timing Services. Live results are available at www.twelve1running.com.

QUESTIONS CALL OR TEXT: KENDRA HOOVER (405) 761-8146 EMAIL: hoover@mooreland.k12.ok.us

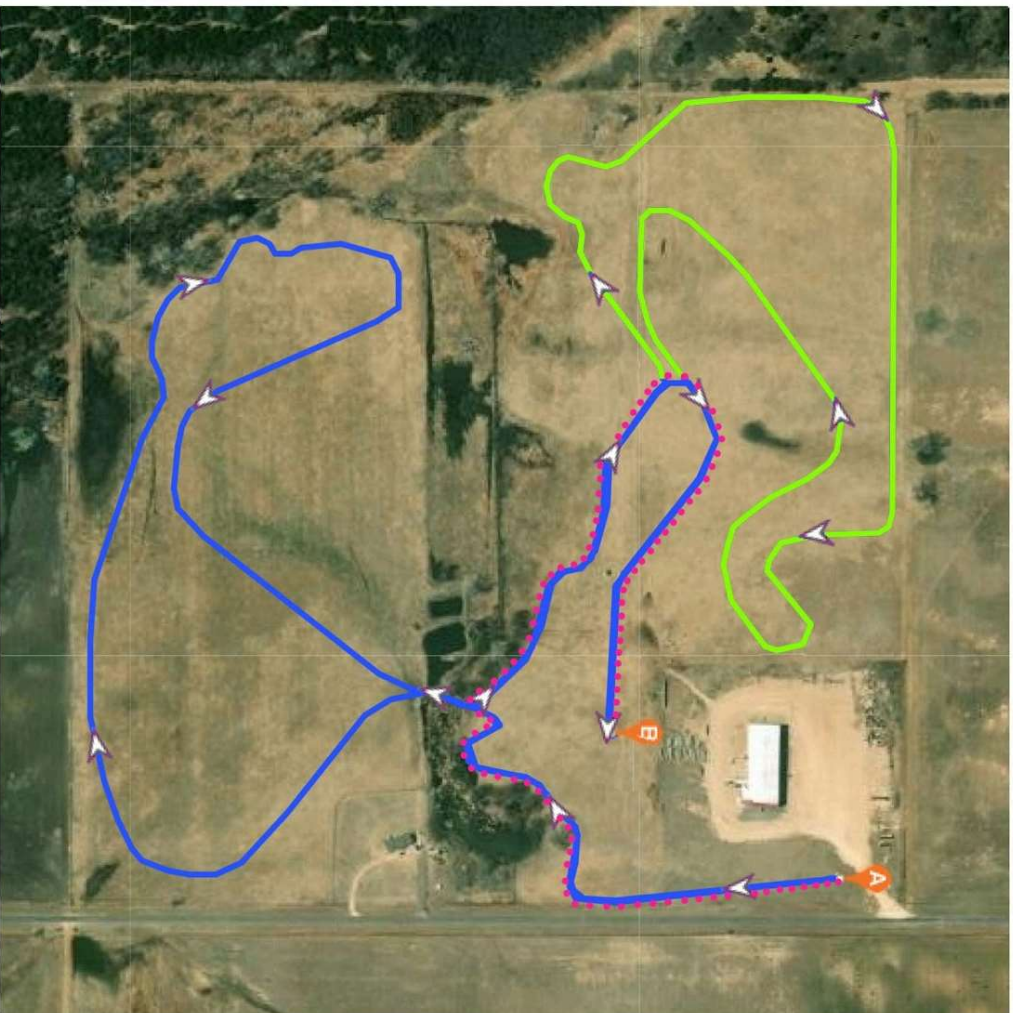
MOORELAND XC COURSE LOCATION



From Mooreland:
Continue East on US 412
turn South onto
County Road 214.

Travel 3.25 miles, the
course will be on the west
at the large red barn.





MOORELAND

COURSE LEGEND

HS BOYS 5000M BLUE & NEON

HS GIRLS 3200M BLUE

JH BOYS 3200M BLUE

JH GIRLS 3200M BLUE

ELEMENTARY 1300M PINK DOTS