



# 39<sup>TH</sup> ANNUAL HOLLAND HALL CROSS COUNTRY INVITATIONAL



**SATURDAY, SEPTEMBER 21, 2024**

## LOCATION & COURSE

Our course is located completely within our campus at 5666 E. 81st Street, between Sheridan and Yale, in Tulsa. It is a rolling grass/dirt course, crossing short stretches of gravel and pavement with two relatively steep climbs through a wooded trail for the 5000m course. The 3200m course is a 2 loop course with no hills.

<u>SCHEDULE</u>	<u>Entry Limits</u>	<u>Time</u>	<u>Distance</u>
Coaches Meeting (Startling Line)		8:50 am	
Varsity Boys	<i>7 runners</i>	9:00 am	5000m
Varsity 5k Girls	<i>unlimited</i>	9:30 am	5000m
JV Boys	<i>unlimited</i>	10:15 am	5000m
Varsity 2 Mile Girls	<i>unlimited</i>	10:50 am	3200m
Jr. High Boys	<i>unlimited</i>	11:20 am	3200m
Jr. High Girls	<i>unlimited</i>	11:45 am	3200m
Elementary Boys	<i>unlimited</i>	12:15 pm	1600m
Elementary Girls	<i>unlimited</i>	12:30 pm	1600m

*NEW - There will be 2 high school girl races, 5k and 2 Mile. You can enter in as many runners in either race. Each school can enter in both races, you can enter some in the 5k and the rest in 2 Mile.*

## REGISTRATION

Coaches must submit all entries on the ENDURO USA™ website: [www.endurousa.com](http://www.endurousa.com). — **NO ADDITIONAL ENTRIES AFTER THE DEADLINE. —ONLINE ENTRIES DEADLINE: September 20 at noon.** Complete ALL the steps on the “Entries Window”. Make sure to “VERIFY”. TEAMS WILL NOT BE ADDED AT THE MEET. If you need help with your ENDURO USA™ account, please email your questions to [jhughes@elginps.net](mailto:jhughes@elginps.net).

## MEET TIMING & RESULTS

RFID Chip Timing for the meet is provided by 12:1 Running Timing Services. Live results are available at [www.twelve1running.com](http://www.twelve1running.com).

## ENTRY FEE

**High School:** Boys - \$50; Girls - \$50 or \$85 both high school teams or \$10 per individual.  
**Junior High:** Boys - \$50; Girls - \$50 or \$85 for both Junior High teams or \$10 per individual.  
**JV** teams are free with varsity team entered if not same as varsity fee.  
**Elementary** race is free.

Make checks payable to Holland Hall School.

## AWARDS

Trophies will be given to the top three schools in Varsity/Jr High divisions. Medals will be awarded to the top fifteen (15) Varsity/Jr High individuals and top ten (10) JV individuals.

## CONTACT

Greg Spencer  
 5666 E. 81st St.  
 Tulsa, OK 74137

Office Phone: 539-476-8166  
 Cell Phone: 918-510-8174  
 Fax Number: 918-481-1145  
 Email: [gspencer@hollandhall.org](mailto:gspencer@hollandhall.org)



1

6

5

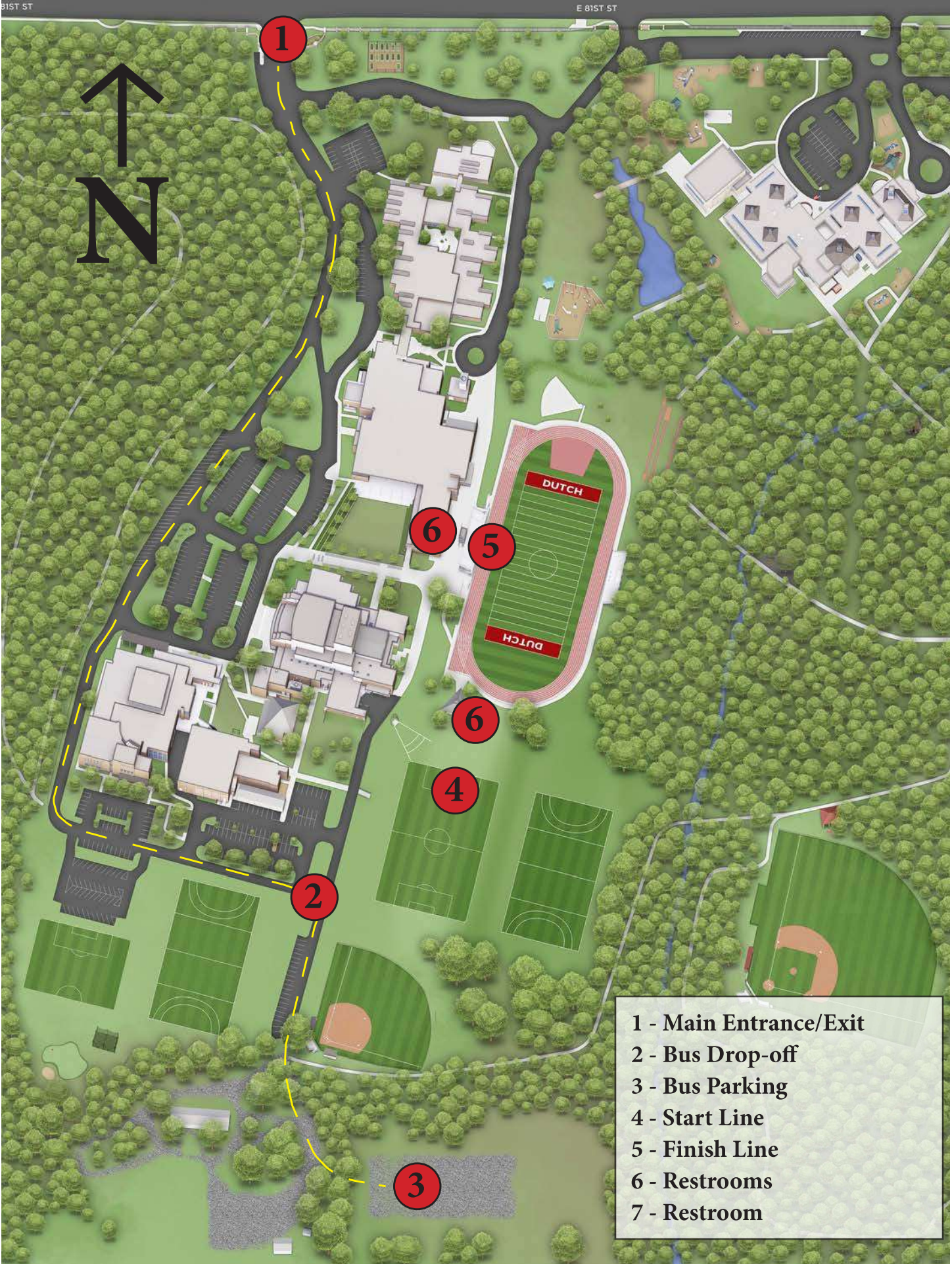
6

4

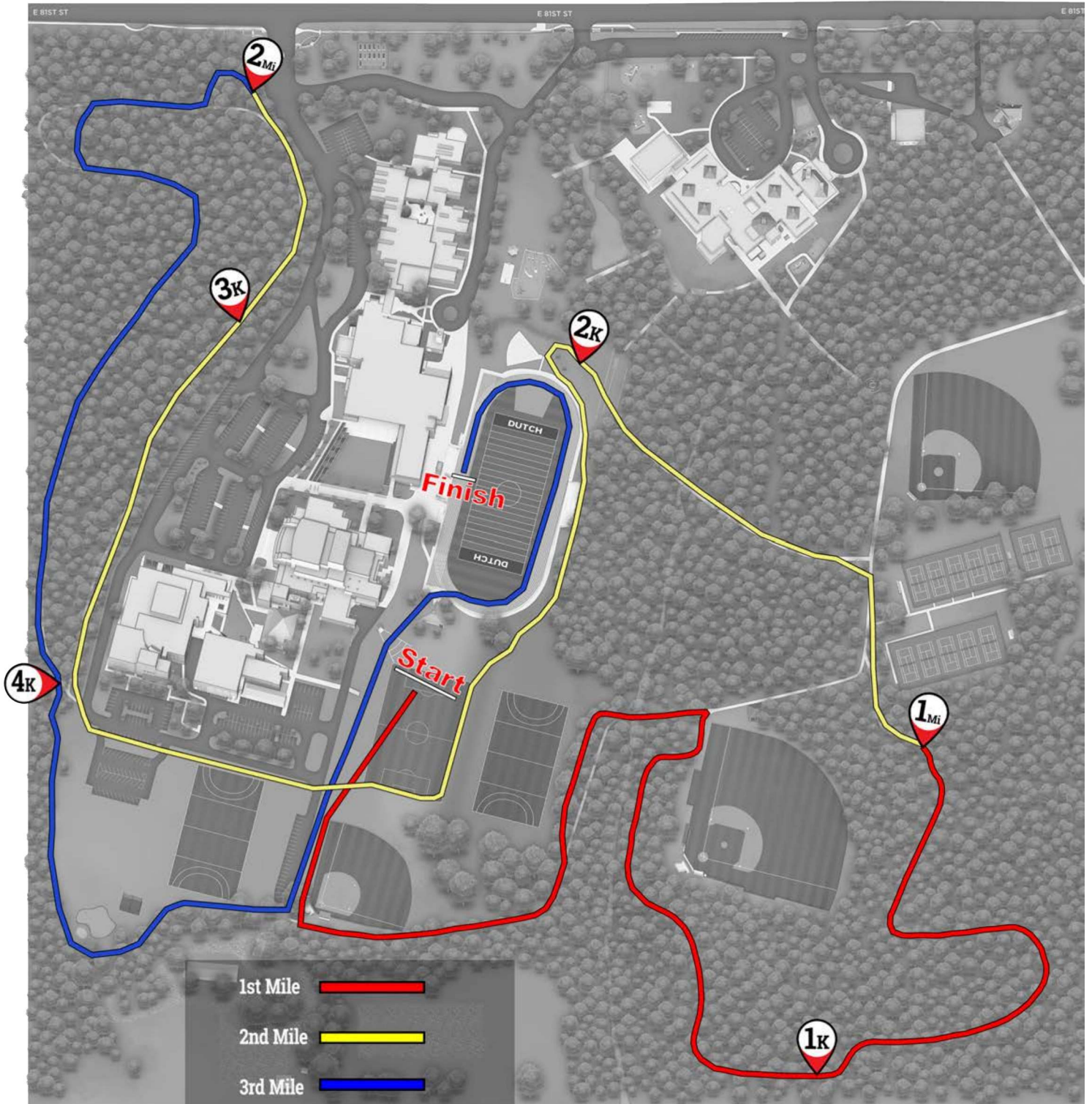
2

3

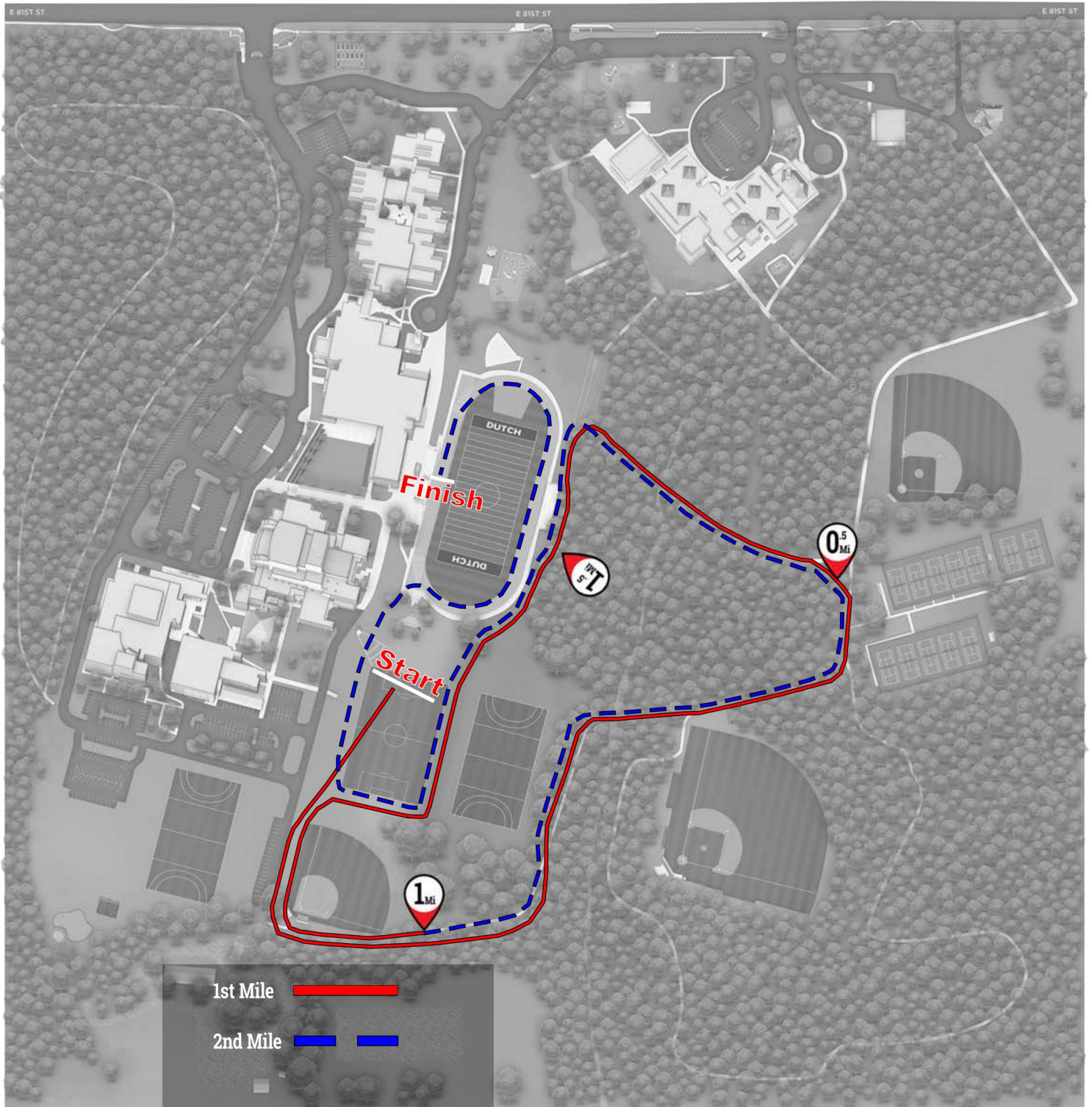
- 1 - Main Entrance/Exit
- 2 - Bus Drop-off
- 3 - Bus Parking
- 4 - Start Line
- 5 - Finish Line
- 6 - Restrooms
- 7 - Restroom



# Holland Hall Cross Country 5000m



# Holland Hall Cross Country 3200m



# Holland Hall Cross Country 1600m

